



## SnapShot/32

**SnapShot/32** brings professional quality, convenient Windows 95 and NT screen captures to your fingertips. It was designed for ease of use, with powerful and useful features to aid the professional as well as support the needs of the occasional user. Use it just a few times you'll find it to be indispensable.

**SnapShot/32** was selected by *Siemens Nixdorf* as a standard software component distributed with their powerful [CELSIUS personal workstations!](#)

Click the button above to move immediately to the [QuickHelp](#) screen to review each of the many features it offers. Some of the more impressive features are listed here. Click on any button for more details.

- Save your image** as a [BMP](#), [GIF](#), or [JPEG](#) file. GIFs can optionally be interlaced and include transparent backgrounds, and **SnapShot/32** will now create new progressive JPEGs, perfect for World Wide Web page use. Choose your color depth for BMP captures, too.
- Include the cursor image in your capture** for a special look few capture programs can bring to you.
- Choose your own HotKeys** that quickly capture the entire Desktop, any Rectangle you outline, or the highlighted Window or Client, and **automatically repeat the capture** every x seconds or by using another HotKey.
- Automatically save each of your captures to a file** by default you can even trigger new captures every x seconds and have the filename incremented.
- Print your capture direct from SnapShot/32** it will expand the image to the size of the paper and margins that you set, and even add a frame, reverse, or reduce the output to black and white!
- Drag and Drop** BMP, GIF, and JPEG files on **SnapShot/32** to open them!

For complete information on all that **SnapShot/32** brings to you, use the [QuickHelp](#) button above for an image of all the menu options, or choose the [QuickReference](#) alphabetical listing of the same information.

For **customer service** and **support** information, please [click here](#).

For **Registration** information, please [click here](#)



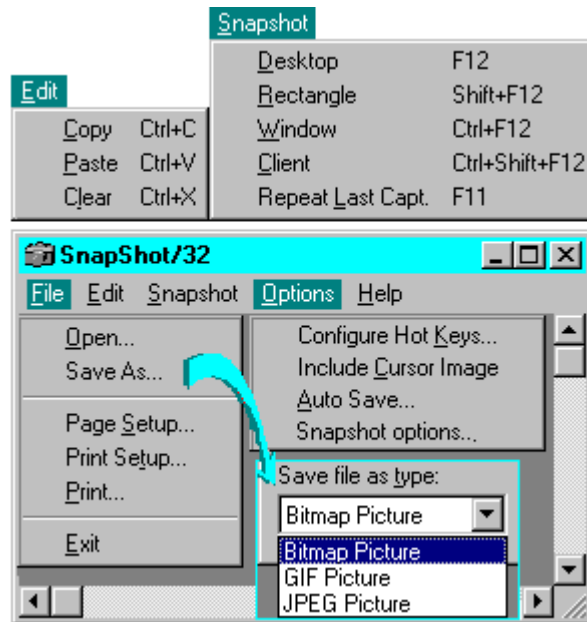
## SnapShot/32

This graphic will conveniently tell you everything you need to know about [SnapShot/32s](#) many features.

It serves as both as a quick introduction to all [SnapShot/32](#) can do to make screen captures easier, as well as an ongoing reference when it is required.

Each drop-down menu is included here. Simply click on any menu selection for a complete explanation of the function it accesses.

**TIP:** There's more to [SnapShot/32](#) than meets the eye. Be sure to check out each menu item to find some of the most useful features.



## SnapShot/32

**Click on any command for a quick explanation of its function.**

[Auto Save](#)

[Clear](#)

[Client \(Snapshot\)](#)

[Configure Hot Keys](#)

[Copy](#)

[Desktop \(Snapshot\)](#)

[Enter License Number](#)

[Include Cursor Image](#)

[Open](#)

[Paste](#)

[Page Setup](#)

[Print/Print Setup](#)

[Rectangle \(Snapshot\)](#)

[Registration](#)

[Repeat Last Capture](#)

[Save BMP](#)

[Save GIF](#)

[Save JPEG](#)

[Snapshot Options](#)

[Technical Support](#)

[Window \(Snapshot\)](#)

## Open

Open a GIF, BMP, or JPEG file.

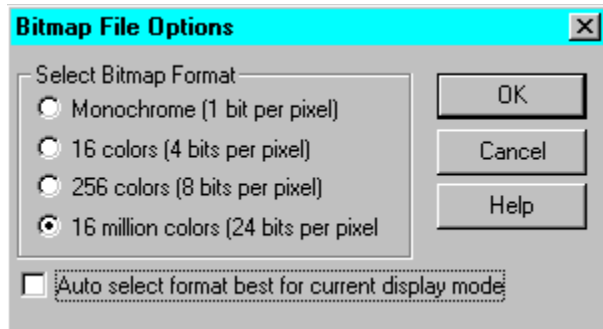
You can also open these file formats simply by dragging and dropping a file to [SnapShot/32](#) or specifying a filename in a command line.

## Save As

Save As opens the standard Windows Save dialog. Click on the **Save File As Type** to choose from [BMP](#), [GIF](#), or [JPEG](#) file formats.

## Save BMP

Select your file format from the standard Windows save dialog, and then choose your target directory. **Click on Options** to select from additional BMP format choices:



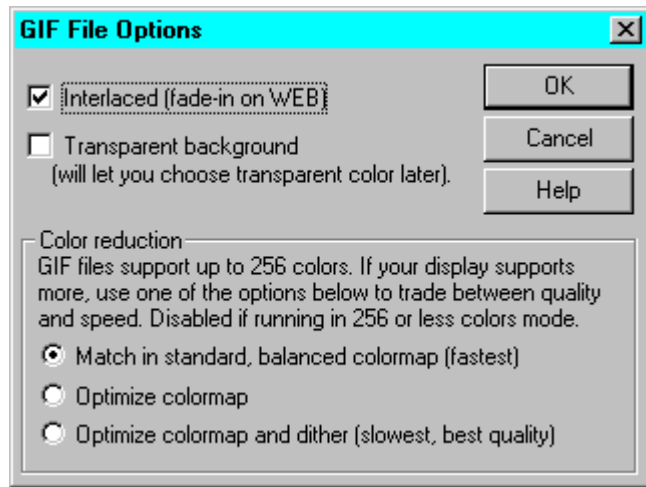
Normally, you will want to leave **Auto select** checked to save your capture in the current display mode. However, you can select from Monochrome, 16, 256, or 16 million colors by deselecting Auto select and clicking on any other choice.

## **Save Options**

Click here to open the Save Options dialog. It will let you set options specific to currently selected picture format.

## Save GIF

Select your file format from the standard Windows save dialog, and then choose your target directory. **Click on Options** to select from additional GIF format choices:



**Interlaced**, to fade in when used on the World Wide Web

**Transparent Background**, to allow your background color or bitmap to display behind your graphic when used on the World Wide Web

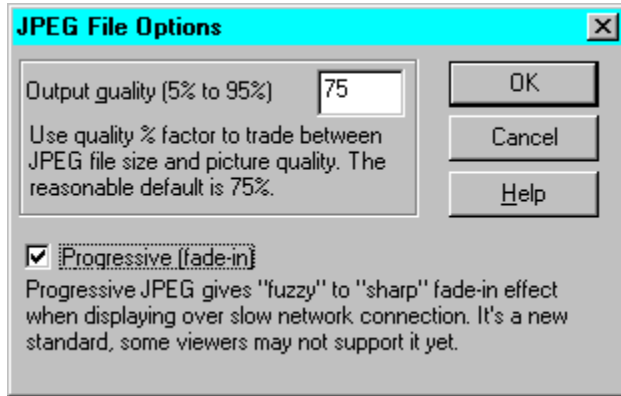
**Color reduction** may be necessary since the standard GIF format only supports 256 colors. [SnapShot/32](#) lets you choose from three options:

- fastest: match in standard, balanced colormap
- medium: optimize colormap
- slowest, but the best quality: optimize colormap and dither

If you are running in less than 256 colors, these options are disabled.

## Save JPEG

Select your file format from the standard Windows save dialog, and then choose your target directory. **Click on Options** to select from additional JPEG format choices:



You may choose an output quality factor to reduce the size of your capture file. We recommend 75% as a good place to start, but you may wish to experiment.

JPEG files can be saved in the new progressive format for World Wide Web use. This means they will appear in their entirety, and then sharpen from their original fuzzy appearance. Not all web browsers support this new standard.

## **Print/Print Setup**

Selecting Print will provide the familiar Windows print dialog.



## Page Setup

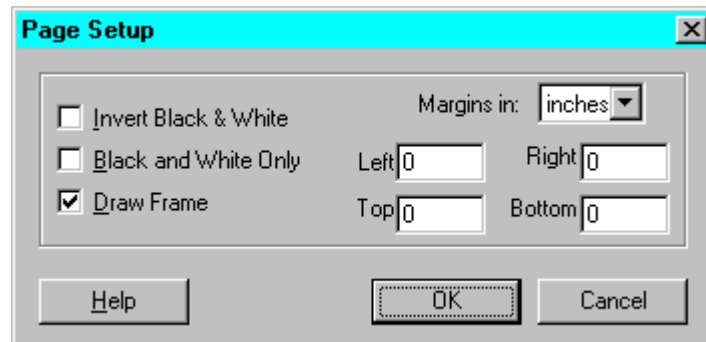
Choose from several custom setup options that will apply when you print your capture.

**Invert Black & White** is a great option for creating negative transparencies of screen shots *saves on toner, too*, if your capture has lots of dark areas.

**Black and White Only** eliminates greyscales for a cleaner look in some instances.

**Draw Frame** adds a thin line frame around the image for that finished look.

**Specify Margins** in inches, cm, or mm measurements for all four sides of your captured image. [SnapShot/32](#) will automatically expand the size of the image to fill the size of the paper within the margins specified.



## Copy

Copy the current capture to the Windows clipboard

## Paste

Paste the contents of the Windows clipboard into [SnapShot/32](#).

## Clear

Clear the current capture  
from [SnapShot/32](#).

## **Desktop (Snapshot)**

Click to capture the entire desktop (all you can see on the screen)

## **Rectangle (Snapshot)**

When clicked, a cross cursor (+) will appear.

Click with your left mouse button where you want to start the capture area, and then release it. Drag the outline to enclose the area you want to capture, and click the mouse button again.

You can abort the function at any time by clicking on your right mouse button.

**TIP:** [See Configure Hot Keys](#)

## Window (Snapshot)

When clicked, a cross cursor (+) will appear. As you move your mouse around, a blinking frame will appear around the target object.

Move to the Window you want to capture, and click with your left mouse button.

The entire Window, including the title bar and borders will be included.

Click your right mouse button to abort this function.

**TIP:** If your capture includes only a sub-window within a Window you want to capture, try clicking on the title bar or frame of the Window you want.

**TIP:** [See Configure Hot Keys](#)

## Client (Snapshot)

When clicked, a cross cursor (+) will appear. As you move your mouse around, a blinking frame will appear around the target object.

Move to the Window you want to capture, and click with your left mouse button.

Only the inside area of the Window you choose will be captured. The title bar and borders will be omitted.

Click your right mouse button to abort this function.

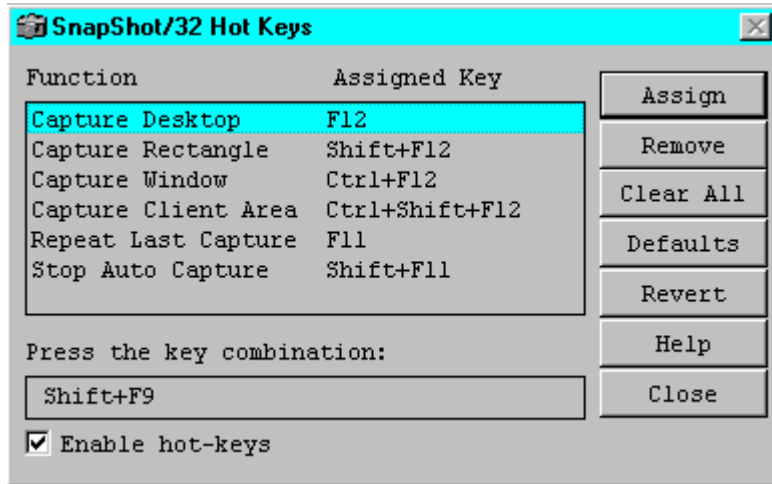
**TIP:** [See Configure Hot Keys](#)



## Configure Hot Keys (Snapshot)

Hot Keys is a convenient feature of [SnapShot/32](#). Even when minimized, the program stands ready to accept your hot key combination to immediately capture a screen!

The Hot Keys (keyboard shortcuts) for screen captures can easily be customized to your preference.



**Assign** takes your keyboard input and assigns it to the highlighted function

**Remove** deletes the Assigned Key (Hot Keys)

**Clear All** deletes all Assigned Keys (Hot Keys)

**Defaults** returns all Assigned Keys to their original states

**Revert** returns all Assigned Keys to the assignments that were in effect when you opened the dialog

**Enable hot-keys** turns the function on and off

Highlight the function you wish to change, and then locate your cursor in the Press the key combination box. Execute the key combination you want for that function, and then click on Assign. Your new Hot Key assignment will also be shown in the [SnapShot/32](#) menu option.

**TIP:** Be sure not to assign Hot Key combinations that might conflict with another program. To prevent any problems with specific programs, you can temporarily disable [SnapShot/32s](#) hot keys in the dialog shown above.

## Include Cursor Image

You may optionally include the image of your current cursor in your capture.

**TIP:** Use the cursor to highlight a point of interest in your capture. [SnapShot/32](#) can capture some cursors that were previously thought invisible to all such programs. Due to non-standard ways in which cursors are handled by some programs, some custom cursors simply cannot be captured.

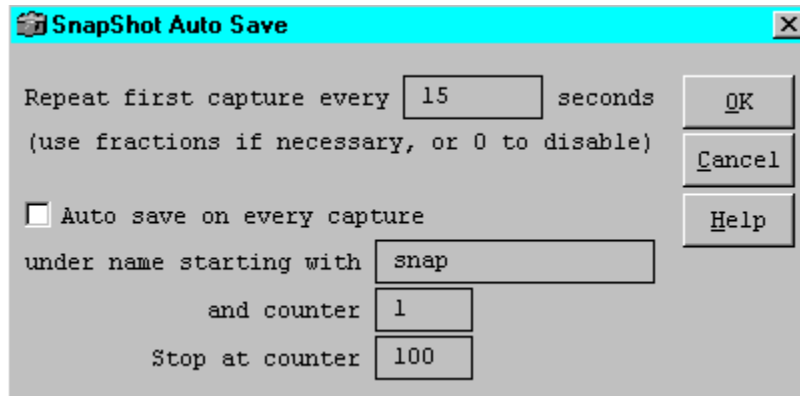
In Windows 95, the standard set of cursors is captured, as well as those defined by applications. In Windows NT, the cursor shape may be incorrect if it is within the console (DOS Prompt) window.

*This function is only available in registered versions of SnapShot/32. To register, select the Register item from within the Help menu.*

## Auto Save

You can use the Auto Save feature in two ways:

Check the Auto Save on every capture check box, and [SnapShot/32](#) will now wait for you to make the first screen capture. It will then minimize, and whenever you press the Repeat Last Capture Hot Key, it will capture the current state of the same screen area you originally defined and save it to a file name you choose, incrementing the number.

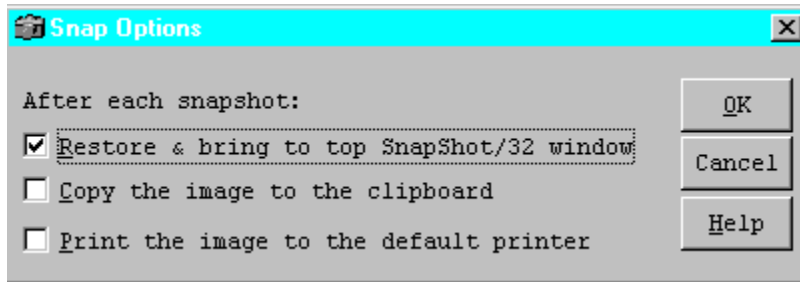


If you enter a number (other than zero) in the Repeat first capture every [ ] seconds, and check the Auto save on every capture option, [SnapShot/32](#) will automatically produce and save a screen capture of the original area you defined until you tell it to stop, using the Stop Auto Capture hot key. If you change the area that you are capturing without stopping Auto Save, it automatically switches to capturing the newly defined area.

**TIP:** These [SnapShot/32](#) functions are great for producing graphics for manuals or other instructional materials, to show and teach a series of steps within a program window. Include the cursor for extra emphasis on specific areas.

## Snapshot Options

In this dialog you specify SnapShot/32's behavior after a capture is completed.



If you uncheck the *Restore & bring to top* box, the [SnapShot/32](#) window will remain minimized (stay in the task bar) after the snapshot.

The other two check-boxes allow you to instantly copy the image to Windows clipboard or print it using your default printer.

**TIP:** Sometimes you'll find it very handy to keep [SnapShot/32](#) minimized in the task bar. You may start your snapshots by clicking with the right mouse button on a minimized [SnapShot/32](#) window or by using hot keys, so it will print or copy images instantly.

## Repeat Last Capture

Use this menu item or Hot Key to quickly repeat the last capture executed.

**TIP:** [See Configure Hot Keys](#)

## Enter License Number

When you register [SnapShot/32](#), you will receive a license number to enter in this dialog. It will immediately remove all of the registration messages as well as enable some additional, helpful features that are unavailable in the shareware version as an incentive for users to register the program.

To complete the dialog and register the program,

- click on the dot alongside the type of license you have purchased
- enter the registration name exactly as it is provided in the registration document\*
- key in the license number that was provided
- enter the number of licensed copies

If you have not yet registered, click on Cancel. We have provided a convenient registration form accessible from the option in the Help menu in the program.

**TIP:** \*If the registration name is not as requested or misspelled, please contact us promptly.



## SnapShot/32

Support for [SnapShot/32](#) is close at hand. An e-mail message will get the quickest response. Be certain to provide as much background information as possible.

We also welcome your comments and input for future releases of [SnapShot/32](#).

e-mail: [gregko@kagi.com](mailto:gregko@kagi.com)

Greg Kochaniak  
3146 Chestnut Street  
Murrysville, PA 15668, USA

Check our World Wide Web site for the latest releases, announcements, and more information about [SnapShot/32](#): <http://198.207.242.3/authors/gregko/gregko.htm>



## SnapShot/32

Register your copy of **SnapShot/32** by selecting "Register" on the button bar above, or from within the help menu. This program is a 'try before you buy' shareware program that relies on your support for continued development, and single user registration is only \$20.00. When you register **SnapShot/32** you will receive a code that enables additional features and become eligible for priority support. You will also be able to obtain free updates of the program through our Web page (address below) with which you can use your registration code, until the next major release.

To register copies of SnapShot/32 please use the "Register" program usually provided with SnapShot/32 to make payments. You can click on Registration in the button bar above to access it. We use KAGI SHAREWARE registration service, which accepts different payment methods, including credit card and invoices. If you live in US or Canada you may also mail me your check or money order directly, payable to Greg Kochaniak.

Greg Kochaniak  
3146 Chestnut Street  
Murrysville, PA 15668, USA

e-mail: [gregko@kagi.com](mailto:gregko@kagi.com)  
<http://198.207.242.3/authors/gregko/gregko.htm>

### License cost:

Single licenses: \$20 each

Site license: \$500

(Site licenses cover a single organization for an area of up to one hundred miles (160 km) in radius.)

World-wide license: \$1500





SnapShot/32

## **CELSIUS: The new Personal Workstation from Siemens Nixdorf**

The area of professional desktop systems is changing dramatically. While in the past traditional workstations were the only powerful alternative, nowadays high-end PC-based systems are the choice.

CELSIUS is the new personal workstation series of *Siemens Nixdorf* blending the power of a workstation with the economy, universality, and future of a PC. Pentium Pro Processor, high speed PCI bus system, and the new 3D processor GLINT 300SX form the base for CELSIUS performance targeting the workstation area. Windows NT, the state of the art and new standard operating system for workstations, gives CELSIUS an overall functionality.

**SnapShot/32** was selected by *Siemens Nixdorf* as a standard software component distributed with their powerful CELSIUS personal workstations.

For more information send electronic mail to [celsjus@mch.sni.de](mailto:celsjus@mch.sni.de) or visit the WWW page at <http://www.sni.de/public/aswwis/visual/welcome.htm>



